



F-Line

F50/F55

Professional use
thanks to
an innovative
filling technology

F-LINE F50/F55 good value for money and powerful



F-LINE the new filler generation of FREY

F50/F55 is a vacuum stuffer for smaller production plants. F-LINE F50 fills the gap between piston stuffers and bigger vacuum stuffers.

The new stuffer generation is well-thought in construction and a great success in price and performance.

F50/F55 masters every kind of filling like straight-filling, portioning and linking.



The stuffer has a serial connection for FREY casing holder devices. F-LINE F50/F55 works with a well concipated rotor system made of stainless steel with eight filling chambers. No wearing out problems due to a well-thought construction and a most favourable material combination. The vacuum pump extracts resting air bubbles (gaps) from the sausage product. You get a perfect sausage aspect - the subsequent natural reddening is improved.



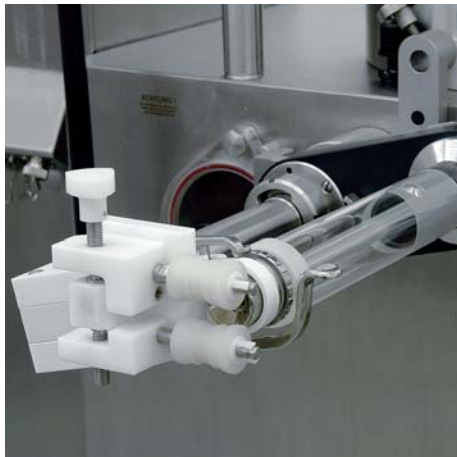
Optional accessories increase the possibilities of use of your F-Line F50/F55



Casing holder devices

are available as accessory for FREY-vacuum stuffers. They make the filling process faster and easier. The casing holder DHGN was especially designed for natural casings. With the help of our casing holder devices you always get tight and solid sausages at maximum filling speed. Extra skilled staff is not required, also unskilled persons can work at the filling station.

The casing holder device is easy to assemble and can be tilted upwards together with the linking gear. The tightness of the casing can infinitely be regulated.



Casing holder tube (DHR)

Optionally we offer a Rollkit with casing holder tube (DHR) for collagen and cellulose casings which ensures a continual feeding of the casing during the linking process.

DHGN and DHR are maintenance-free because no drive is necessary.



Casing spoolers

Furthermore, we offer pneumatic (DA2002) casing spoolers. They save time to increase the productivity of the filling station. In order to come up to your product diversity, you can receive special filling tubes or other additional equipment from us according to your individual order.

Optional accessories increase the possibilities of use of your F-Line F50/F55



Casing holder devices

are available as accessory for FREY-vacuum stuffers. They make the filling process faster and easier. The casing holder DHGN was especially designed for natural casings. With the help of our casing holder devices you always get tight and solid sausages at maximum filling speed. Extra skilled staff is not required, also unskilled persons can work at the filling station.

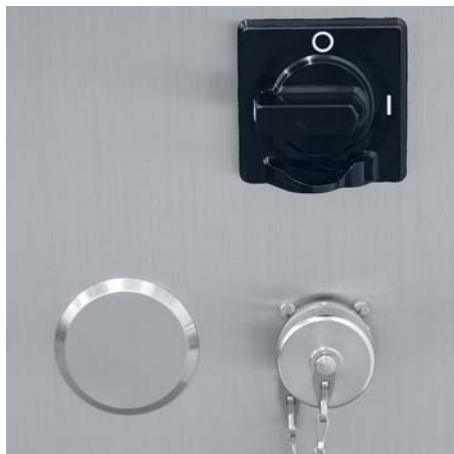
The casing holder device is easy to assemble and can be tilted upwards together with the linking gear. The tightness of the casing can infinitely be regulated.



Casing holder tube (DHR)

Optionally we offer a Rollkit with casing holder tube (DHR) for collagen and cellulose casings which ensures a continual feeding of the casing during the linking process.

DHGN and DHR are maintenance-free because no drive is necessary.



Casing spoolers

Furthermore, we offer pneumatic (DA2002) casing spoolers. They save time to increase the productivity of the filling station. In order to come up to your product diversity, you can receive special filling tubes or other additional equipment from us according to your individual order.

F55 IPC control TC266 with Touch Screen operation

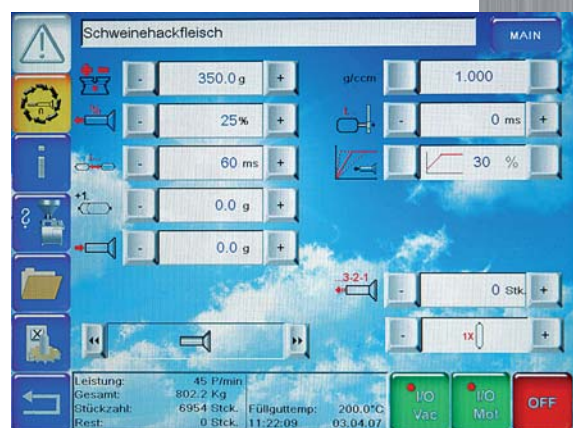
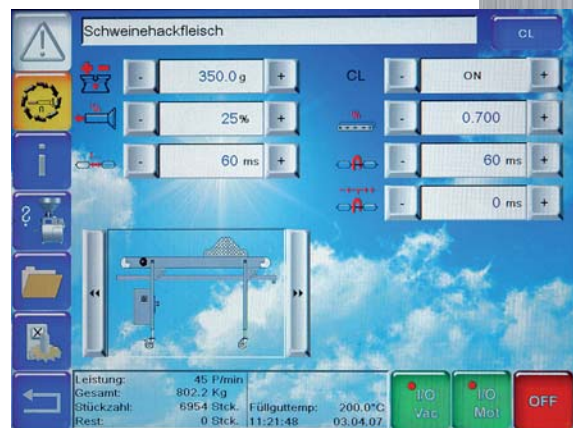
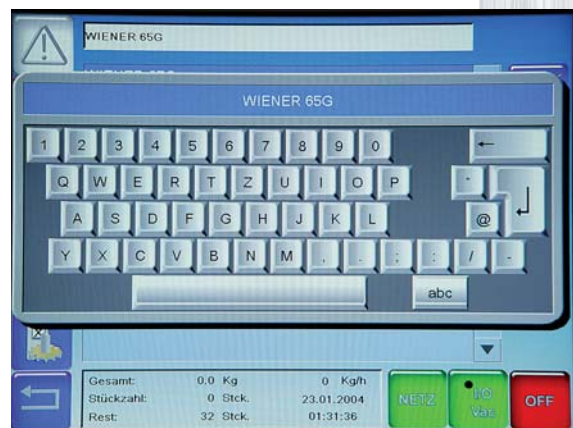
The ultimate filler control which offers all possibilities. Consisting of an industrial PC with 266 MHz and an ergonomic Touch Screen Panel of 8,4".

Survey of functions:

- ✓ **Weight input**
can be chosen between 0,1 u. 100.000 gr
(from 0,0 - 999,9 gr in 0,1 gr. steps)
- ✓ **Number of links** from 0 - 9,9 turns
- ✓ **Clipping time**
- ✓ **Preselection of pause** for portioning and linking
- ✓ **Normal- and continuous operation**
- ✓ **Filling programs with table of contents**
- ✓ **Programs for cooked sausage**
- ✓ **Service- and maintenance programs**
- ✓ **Diagnosis programs**
- ✓ **Counter of quantity and pieces**
- ✓ **Preselection of pieces**
- ✓ **Twist delay / twist advance**
- ✓ **1st portion makeweight**
- ✓ **Speed control** ninitely adjustable also during the filling process
- ✓ **Automatic pressure regulation and torque regulation**
- ✓ **Electric pulse control for automatic clipping machines**
- ✓ **Relieve/sucking back mechanism**
- ✓ **Activation of CL- and CLPS-line**
- ✓ **Activation of grinding head system WK130**
- ✓ **Activation of Kebap-line KL6**
- ✓ **Activation of Pattyformer PF130**
- ✓ **Different languages** adjustable
- ✓ **Program administration with protection**
- ✓ **Software update per USB - stick**
- ✓ **Interfaces: CF Card, USB, Ehternet 10/100 Mbps**
- ✓ **Online connection with your office PC over TCP/IP connection**
- ✓ **Visualizing of linking process**
- ✓ **Logbook of the filling process and mistakes**

Interface/Connection

The filling machines will be integrated in your computer network. This way you have control over your filling machines from your office. The connection is done over the Freeware Software VNC which offers a full functional diversity per telecontrol. You can do all settings on the machines, load or store filling programs with VNC clients in your office. Only start and stop function of the machine can only be done on the machines operating bar.



F50/F55 powerful, practical and conforming to CE - standard



The standard F-LINE F50 is equipped with a divisible 100 litres filling hopper. The filling as well as the intermediate cleaning is facilitated.

Optionally we offer for F-LINE F50/F55 a hopper with 60 litres.

The low filling height makes a power-saving filling of the hopper possible. The hopper is protected by an electronically locking protective grating.

With the detachable accessories holder always everything is readily available.



Drive

You can rarely hear the FREY **Vector Drive** of F-LINE F50. This modern drive type ensures the high portioning exactness.

F-LINE F55 has a **Servo** drive with positioning regulation which ensures the highest portioning exactness.

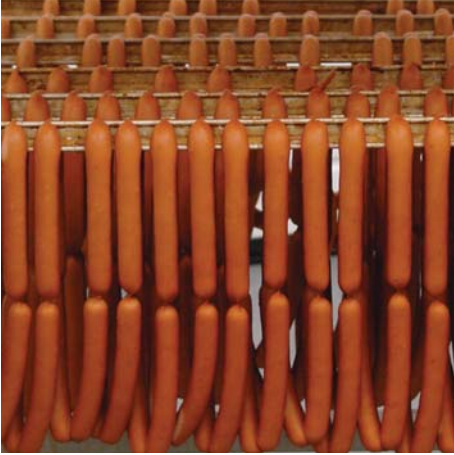
Due to the small dimensions F-LINE F50/F55 finds everywhere a

Linking gear

F-LINE F50/F55 is equipped with a linking gear without limits for your production. It has especially been developed for the industry and has just proved itself. For filling big calibers, you can easily take off the linking gear by means of a quick-closing. Thereby, the way of the sausage meat is shortened and the greasing is minimized.



Convincing ergonomic details



Services

are nowadays more and more important.

The reliability of our demonstrators and technicians stands for the high quality of FREY products.

Our stuffers are well-thought out even in the smallest details. They are well-known for their long service life.

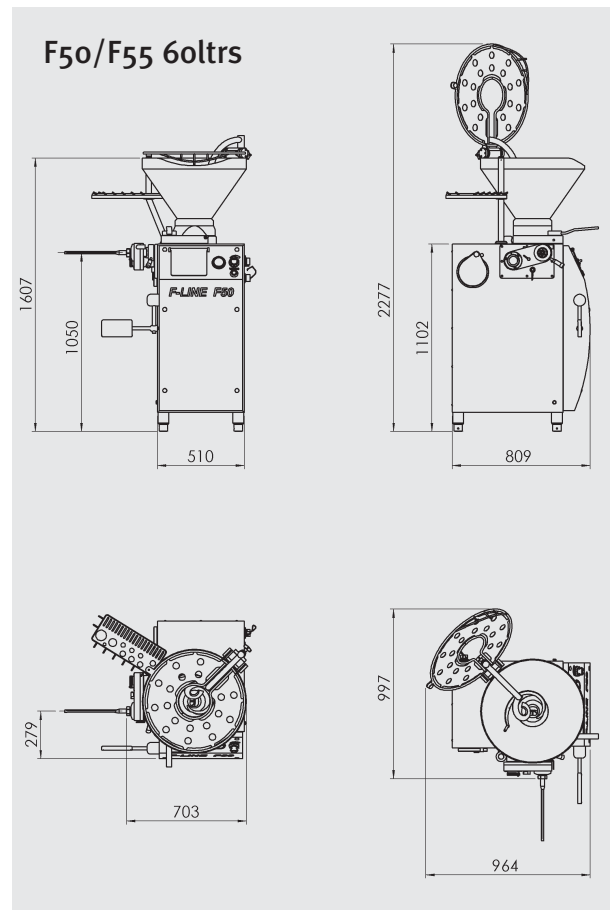
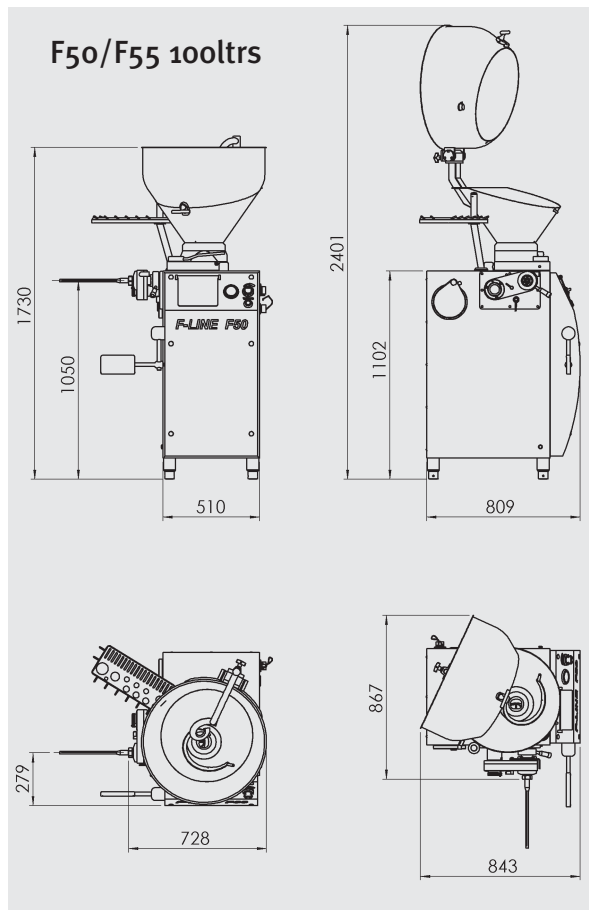
Our trained staff gives you also a advice over the telephone, fax or email in order to be able to help you immediately.

Cleaning and hygiene

A simple cleaning is the basic requirement for best hygienic conditions in the production. Therefore, FREY-stuffers have smooth external contours. F-line is conforming to the CE-standard. The machine housing is completely made of high-quality stainless steel.

The expenditure for cleaning and maintenance is very low due to the easy disassembling and neat countours between the parts.





Technical data:

	F50	F55
Contents of the hopper	60/100 ltrs	60/100 ltrs
Maximum filling power	2.200 kg/h	2.900 kg/h
Filling pressure upto	30 bar	35 bar
Capacity of the filling chamber	82 g	82 g
Number of wings	8	8
Portioning range	5-100.000 g	5-100.000 g
Voltage / Connected load	400 V / 50 Hz	400 V / 50 Hz
Rotor system drive	Fu	Servo
Control type	CAN6o	TC 266
Total connected load	3,75 - 4.40 kw	3,55 - 4,20 kw
Sucking power of the vacuum pump	16 cbm/h	16 cbm/h
Machine weight (net)*	390 kg	400 kg
Portioning speed	max. 300 port/min	max. 500 port/min

Special voltage on request (surplus of weight upto 80 kg)

Technical modifications are subject to change

Accessories:

Rotor extractor
 Outlet cleaner
 Operating instructions
 Counter snake
 Grease gun

Heinrich Frey
 Maschinenbau GmbH

Fischerstraße 20
 D-89542 Herbrechtingen
 Germany

Phone: +49 73 24 / 172 0
 Fax: +49 73 24 / 172 44

Filling tubes:

Flange 73: 12/24/30/42 mm
 Flange 35 (linking): 14/20 mm

Internet: www.frey-online.com
 Email: info@frey-online.com